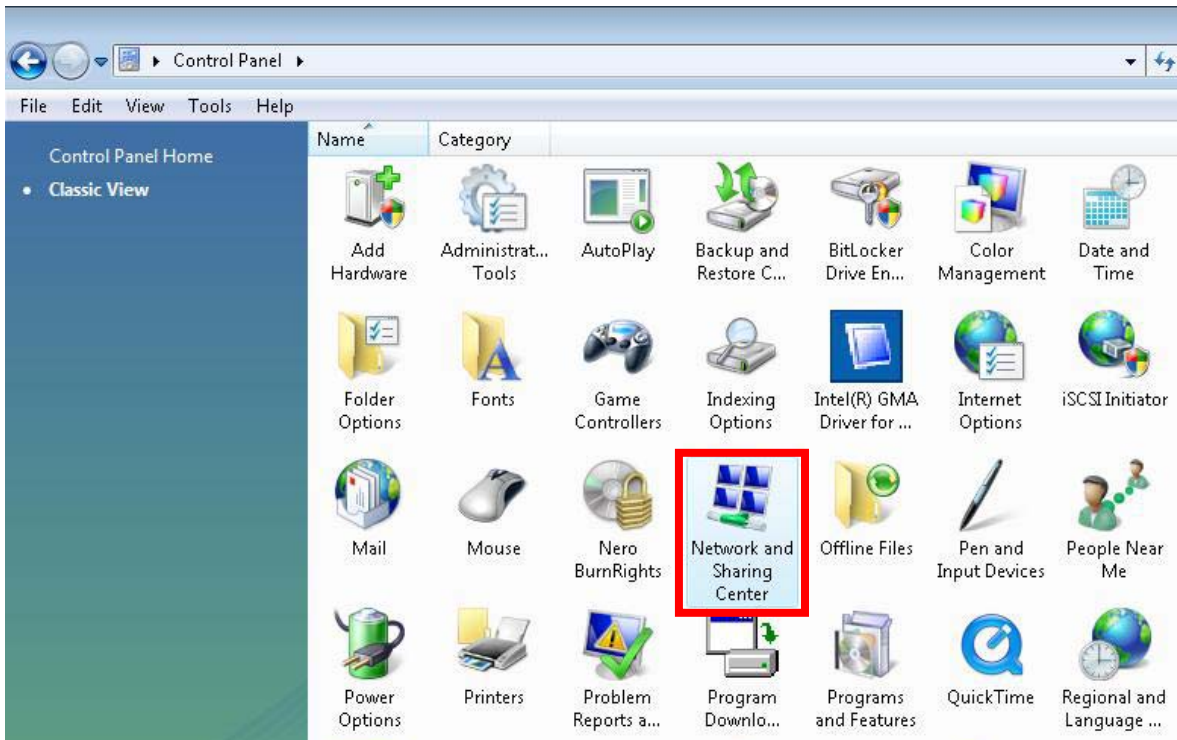


Connecting to Wireless Services as a Vendor/Presenter/Entertainer

This method of accessing the wireless network can only be used on the JCC Campus in William Atkinson Hall and James McDivitt Hall.

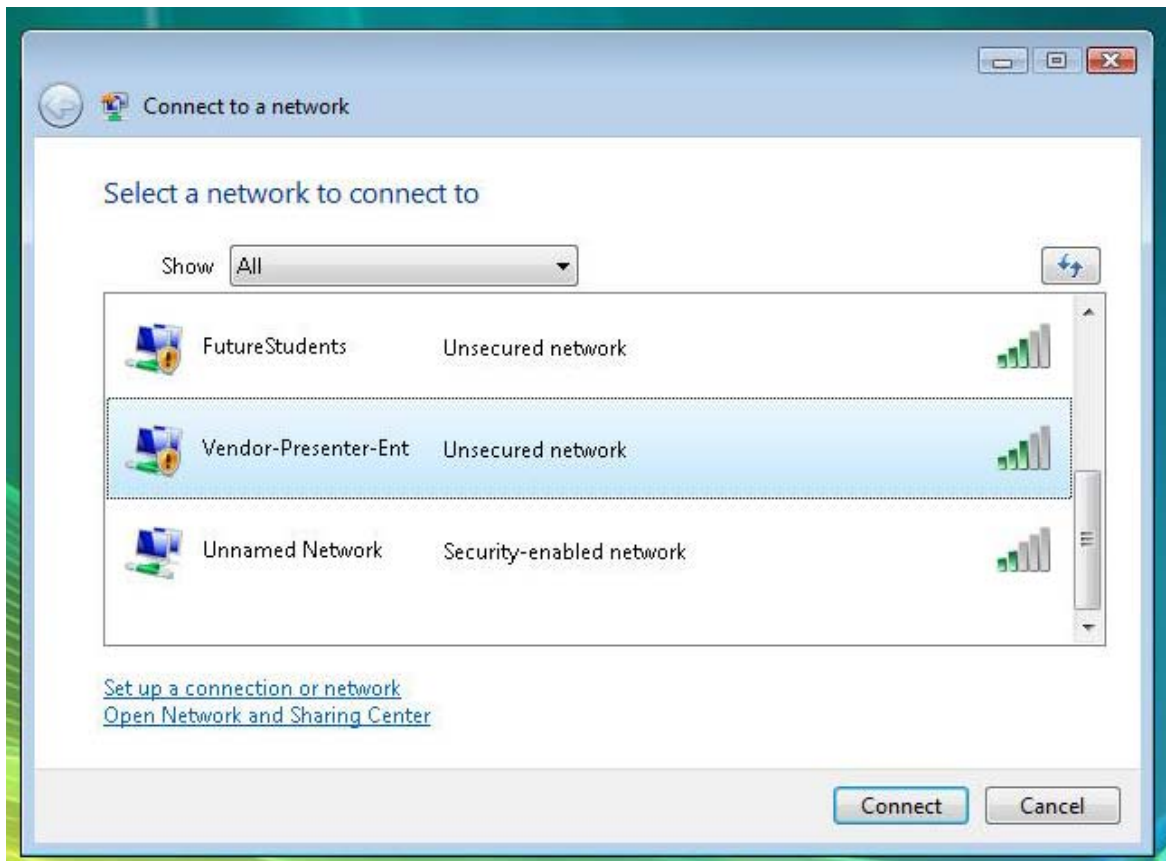
1. Go to Start > Control Panel. Select Classic View.
2. Double-click Network and Sharing Center.



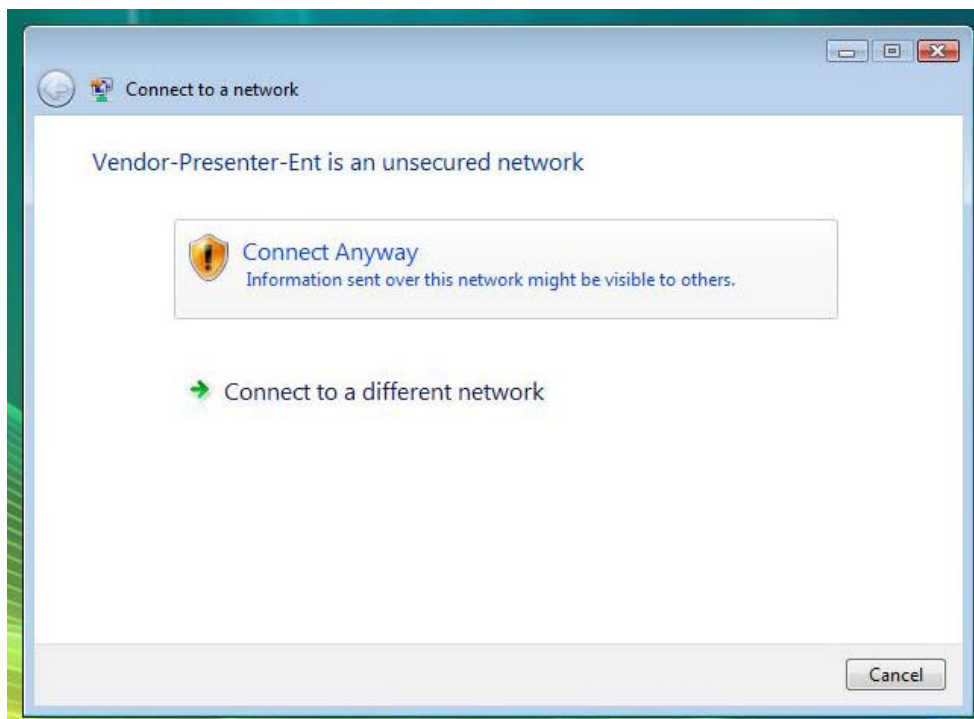
3. On the Tasks panel, click on the “Connect to a network” link.



4. Select Vendor-Presenter-Ent and then click Connect.



5. A window will come up asking if you want to connect to the unsecured network. Select Connect Anyway.



6. When the computer connects to the Vendor-Presenter-Ent wireless network, it will display a message verifying that it has successfully connected to that network. Click on the “Close” button to exit this message.
7. Next, launch Internet Explorer 7. A security warning will be displayed, asking for your confirmation to continue. Select the “Continue on to webpage” option.
8. Log in using the JCC username and password given to you by the department person who organized your visit.

Note: Department that needs to request an account for a vendor/entertainer/presenter will need to contact the JCC Solution Center one full business day in advance to request a generic account and password

See instructions below login prompt for login information.

User Name:

Password:

User Name

Employee's user name is 771

Student's user name is 771

“771” is JCC's shorthand for the first seven letters of your last name, the first seven letters of your first name, and your middle initial.

Password

Your default password is the first letter of first and last name, 2 digits of your day of birth, the last 2 digits of your birth year, and the last four digits of your student/employee I.D. number, all in lower case.

Other wise your password will be what ever you have set your Network Services password to be.

If you need assistance with your username or password, please contact the JCC Solution Center at (517) 796-8639.

9. A screen will appear. You can do one of the following. Redirect to the page you were originally trying to get to, logoff of your session, or view how much time you have left in your session.